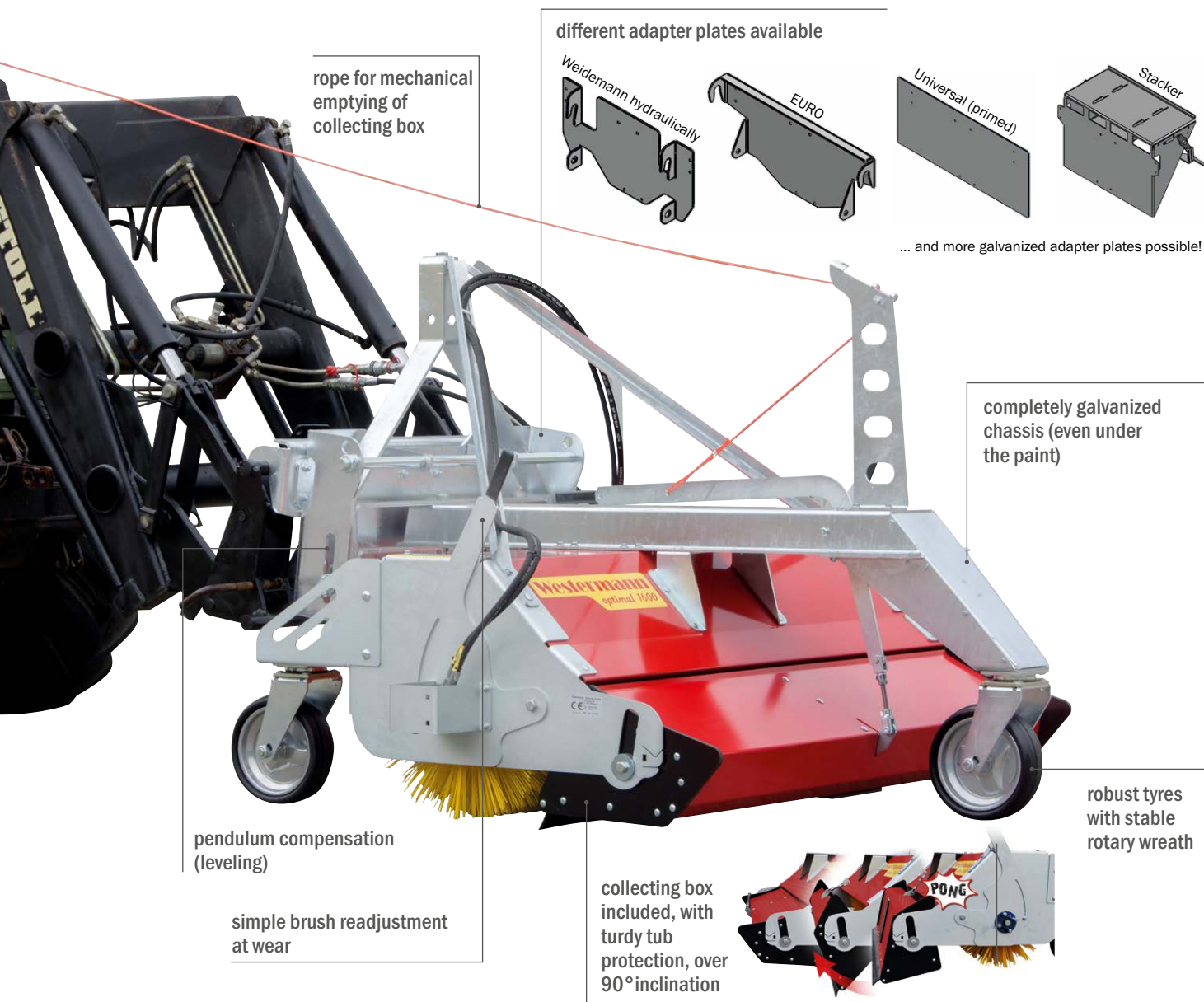


Attaching sweeper Optimal 1600 - front or rear

- roller brush is height adjustable via slot and lever (depending on wear)
- low-wear plastic skids protect the collection box
- free sweeping possible by pulling up the collecting box (no disassembly required)
- for front or rear mounting (additional side brush optionally available for the front version)
- third guide wheel on the front version prevents the machine from buckling up



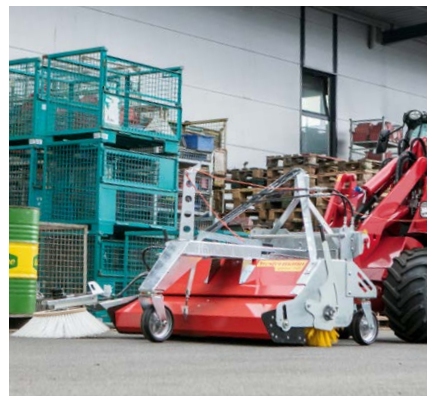
Optimal 1600	
Working width	1600 mm
Brush diameter	520 mm
Depth of collecting box	360 mm
Emptying of collecting box	mechanically, hydraulically possible (surcharge)
Swivelling	mechanically, hydraulically possible (surcharge)
Drive	Gerotor engine
Tyres	2 with rear attachment, 3 with front attachment
Flow rate	20 - 50 l/min.
Recommended speed	approx 200 l/min.
max. operation pressure	180 bar
Weight	approx 280 kg
Mounting options	via adapter plates as rear or front attachment to various carrier vehicles



Watch the video here!



STRONG AND FAST IN USE



(Technical data are approximate and non-binding.)

